



Universal Closure

This closure is an economical option to seal and fill any space under ridge caps, trim and other openings between metal panels. Universal Closure is made of open cell polyurethane foam and easily compresses or expands as necessary to fill gaps between panels. A compression fit is formed as the material gradually expands to its original thickness to fill all voids. It's easy to install and comes in 25' rolls with a glue strip that secures the closure to the metal panel.

ECONOMICALLY PRICED

FILLS GAPS AND VOIDS
BETWEEN PANELS AND TRIM

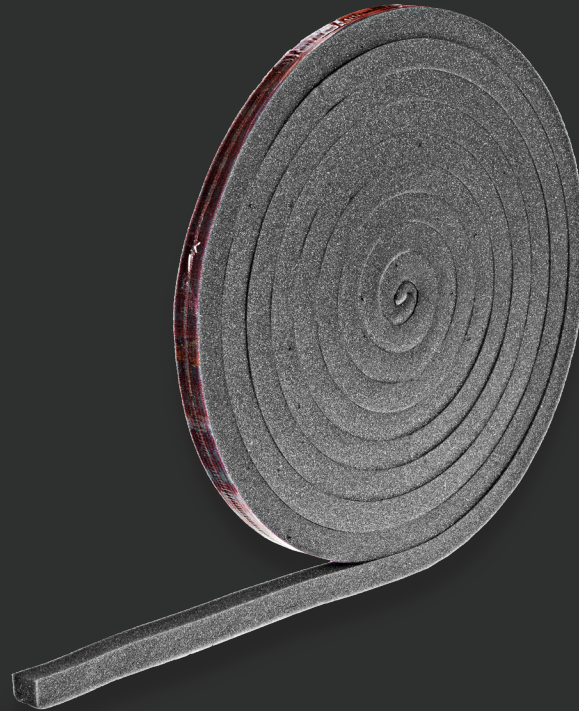
OPEN CELL
POLYURETHANE FOAM

EASILY COMPRESSES
FOR A TIGHT FIT

SECURES WITH A GLUE
STRIP TO THE METAL PANEL

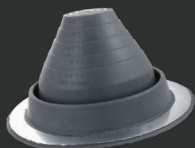


Universal Closure



ITEM #	DESCRIPTION	WIDTH	LENGTH	HEIGHT	PCS/BAG	LB/ROLL
UC11	Universal Closure w/hot metal strip	1"	25'	1"	10	3
UC12	Universal Closure w/hot metal strip	1"	25'	1 - 1/2"	10	4

ALSO AVAILABLE:



DEKS
Round



LEVI'S
BUILDING COMPONENTS
Stretch Wrap



WorkGrip™



FloVent®