

Metalgrip™

W/WASHER

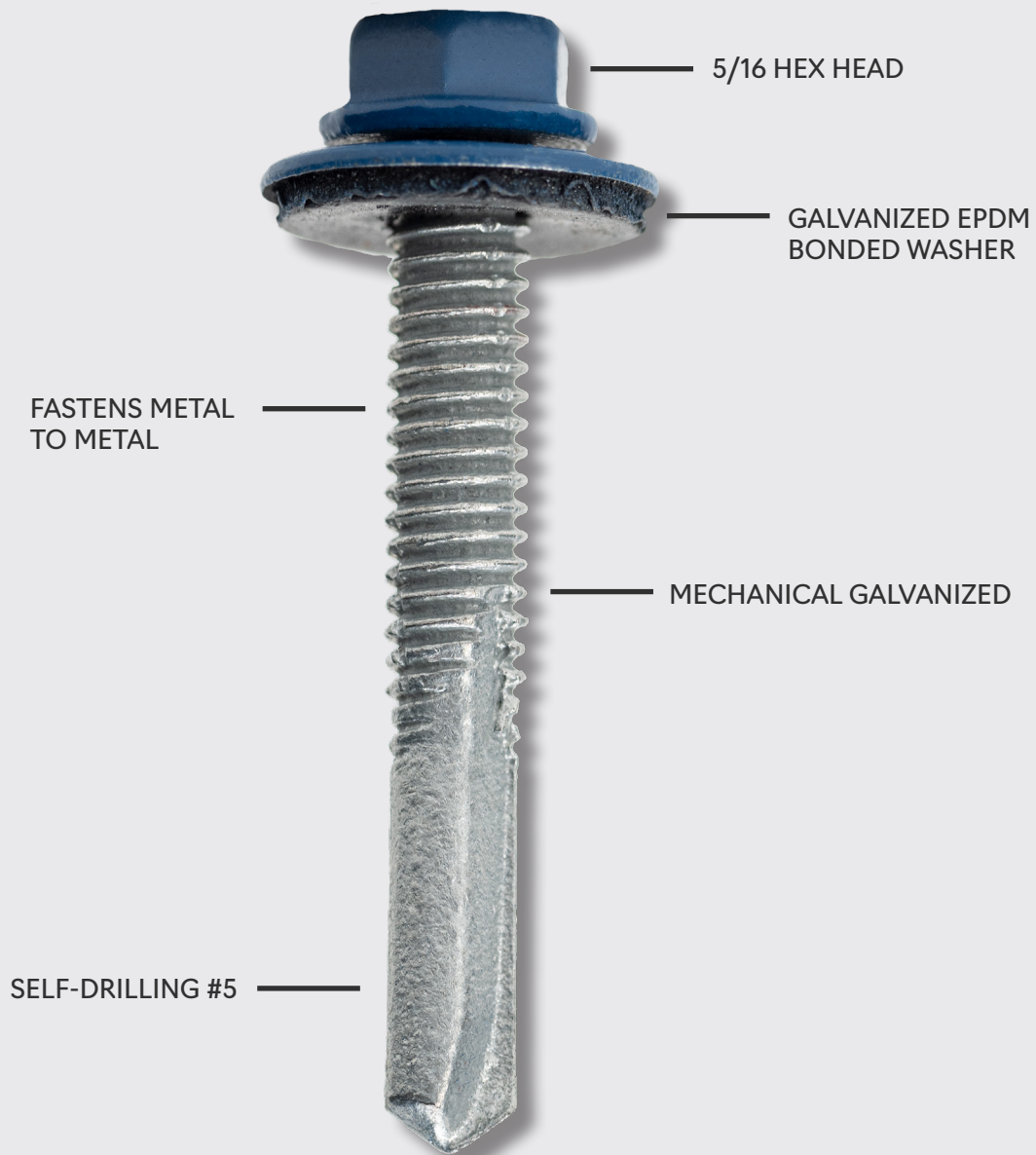
#5
DRILL POINT

#12

AVAILABLE IN
ANY COLOR

QUICK
SHIPPING

Ensure a superior grip by using a specialty screw from the Metalgrip™ family on your next steel project. Secure metal to metal purlins up to a 0.5 steel thickness with the self-drill point #5



Metalgrip™

W/WASHER



QUICK SHIPPING

ITEM #	DESCRIPTION	HEAD STYLE	DRILL POINT	PCS/BOX	LB/BOX
1224114SDT5	#12 - 24 x 1 - 1/4"	5/16 Hex	#5	2,500	36.3
1224112SDT5	#12 - 24 x 1 - 1/2"	5/16 Hex	#5	2,000	31.8
12242SDT5	#12 - 24 x 2"	5/16 Hex	#5	2,200	29.3

PULL OUT STRENGTH

SUBSTRATE	PULL OUT STRENGTH
12 ga HRS	1,093
14 ga HRS	655
16 ga HRS	523
18 ga HRS	368
20 ga HRS	239

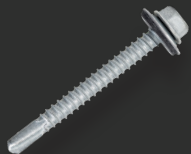
SHEAR
2,470
TENSILE
4,152
TORSIONAL
133



PULL OVER STRENGTH

SUBSTRATE	GAUGE	THICKNESS	PULL OVER STRENGTH
AZ55 Galvalume	29	0.014	489
AZ55 Galvalume	26	0.018	664
AZ55 Galvalume	24	0.024	838
AZ55 Galvalume	22	0.030	1,180

ALSO AVAILABLE:



Metalgrip™
#3



Metalgrip™
#3 W/O WASHER



ProZ SD™
#3



ProZ SD™
#5