



Patented

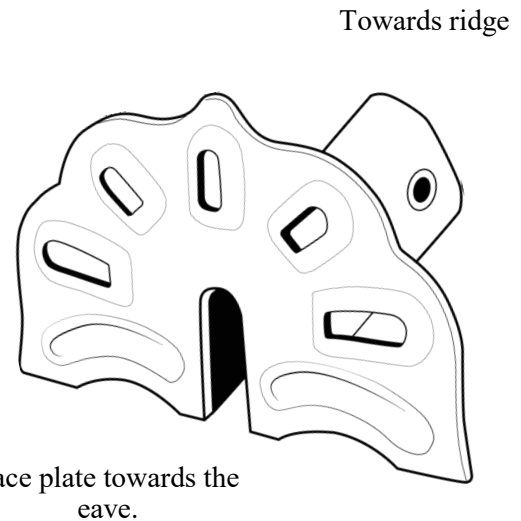
7500 Deco™

Installation Instructions

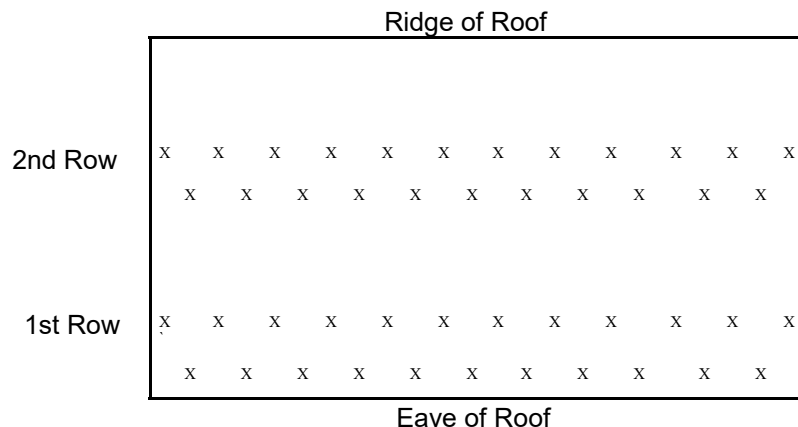
The Snow Defender™ 7500 Deco™ is for standing seam roofing only. It is designed to fit standing seam panels in seam width up to 3/8" and most 1" to 1-3/4" high. It is not designed for seams below 1". Using a 7/32" hex bit unscrew the set screws till they are flush on the inside wall. Place the guard on the seam of the roof. The snow guard blade needs to be towards the eave. With your hand, apply even pressure on the top of the 7500 Deco™. Torque all set screws in an alternate fashion. Set screws are to be torqued to 220 inch pounds.

Note: Most electric & cordless drills will not achieve 220 inch pounds. It is recommended to use a torque wrench.

Failure to install an adequate amount of snow guards and in the proper pattern will void the warranty. Visit www.snowdefendercalculator.com to use our snow guard calculator to determine the amount needed.



For warranty details visit
www.snow-defender.com



Above example is based on Metal Roof Panels being 36" Panels with 9" rib spacing.

Remember it is very important to install the guards properly with the correct quantities. Do not only put snow guards over doorways, walkways, etc.

LEVI'S®
BUILDING COMPONENTS
137 Newport Rd
Leola PA 17540
877-897-7020

www.levisbuildingcomponents.com